

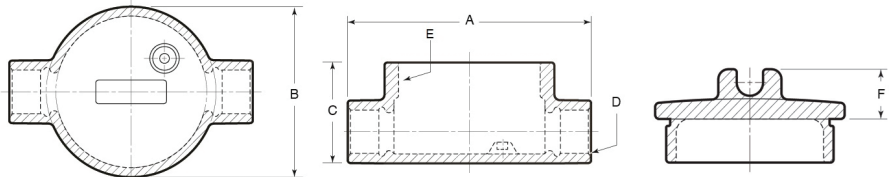
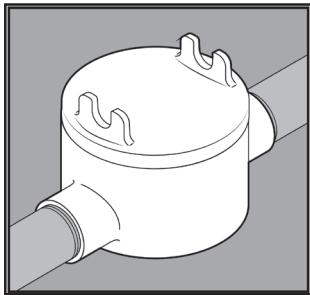
STAINLESS STEEL - HAZARDOUS LOCATION FITTINGS

GUAC CONDUIT BODIES



APPLICATION

- Installed in hazardous area locations to act as pulling and splice boxes, connect lengths of conduit and provide access to conductors for maintenance
- Hold the following ratings:
 - CL I, DIV 1, Groups C, D
 - CL II, DIV 1, Groups E, F, G
 - CL III, NEMA 4X Rated
- Offered in five configurations: C, X, T, B, L
- Supplied complete with cover that has cast-in brackets for use with breaker-bars for tightening/loosening and a neoprene o-ring
- Manufactured in stainless steel to help prevent corrosion
- Can be installed using ordinary hand tools and require little maintenance or repair
- Provided in a bright, polished finish that does not require touch up or painting



PRODUCT DETAILS

Material:

- Body, Cover: CF8M (316 SS)
- O-ring: Neoprene

Standards:

ASTM A351, ASTM F593

Country of Origin:

100% Made in USA

UL File Number:

QBCR.E339535
(Standards 1203, 50, 50E)

Canada UL File Number:

QBCR7.E339535
(Standards 1203, 50, 50E)

Part Number	Conduit Size	Weight/ Each (lbs.)	Dimension (in.)					
			A	B	C	D	E	F
GUAC75	¾ in.	4	5.16	3.60	2.13	¾-14 NPT	3-½-12 UNC	0.94
GUAC100	1 in.	4	5.54	3.60	2.13	1-11-½ NPT	3-½-12 UNC	0.94

